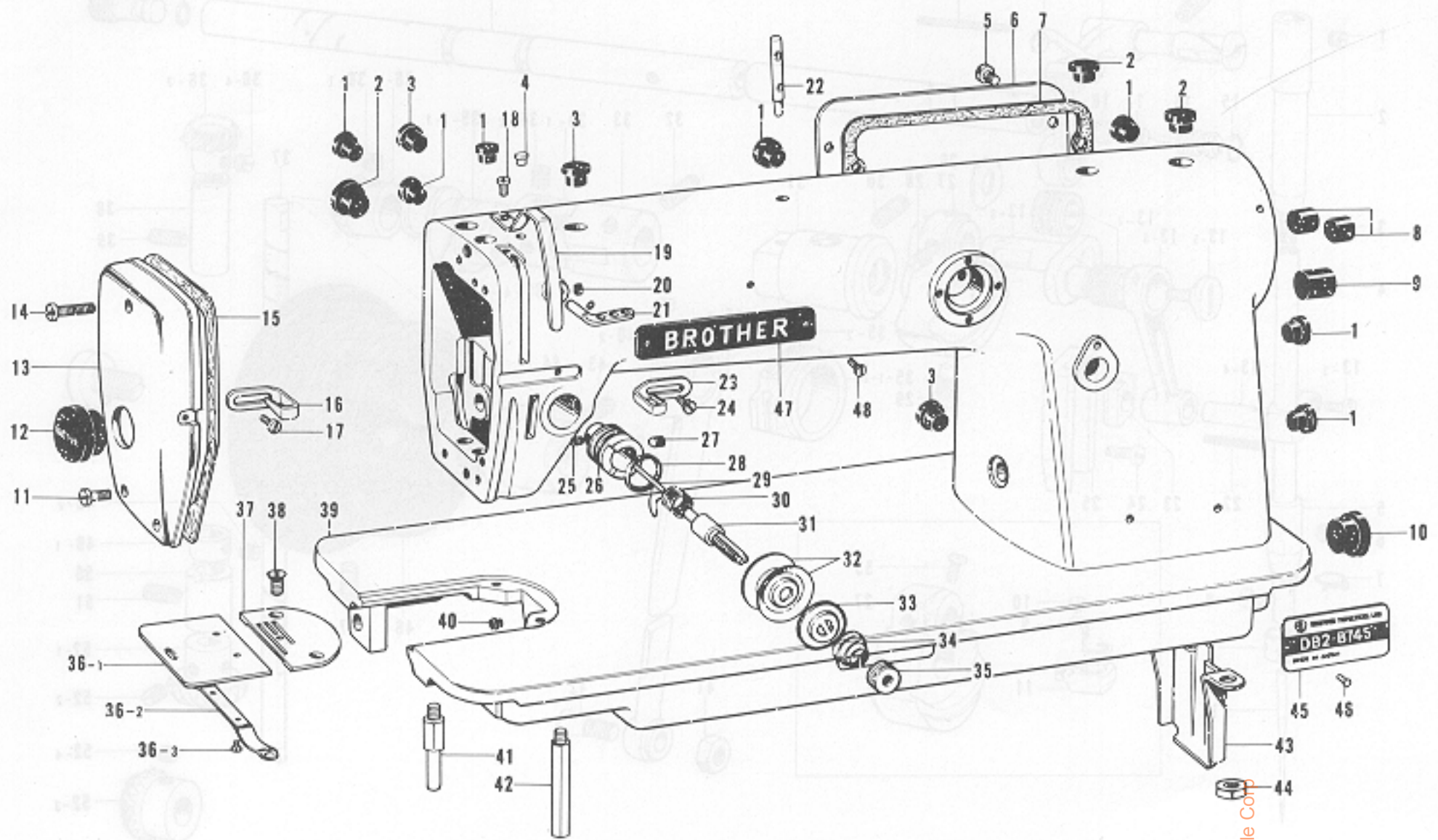
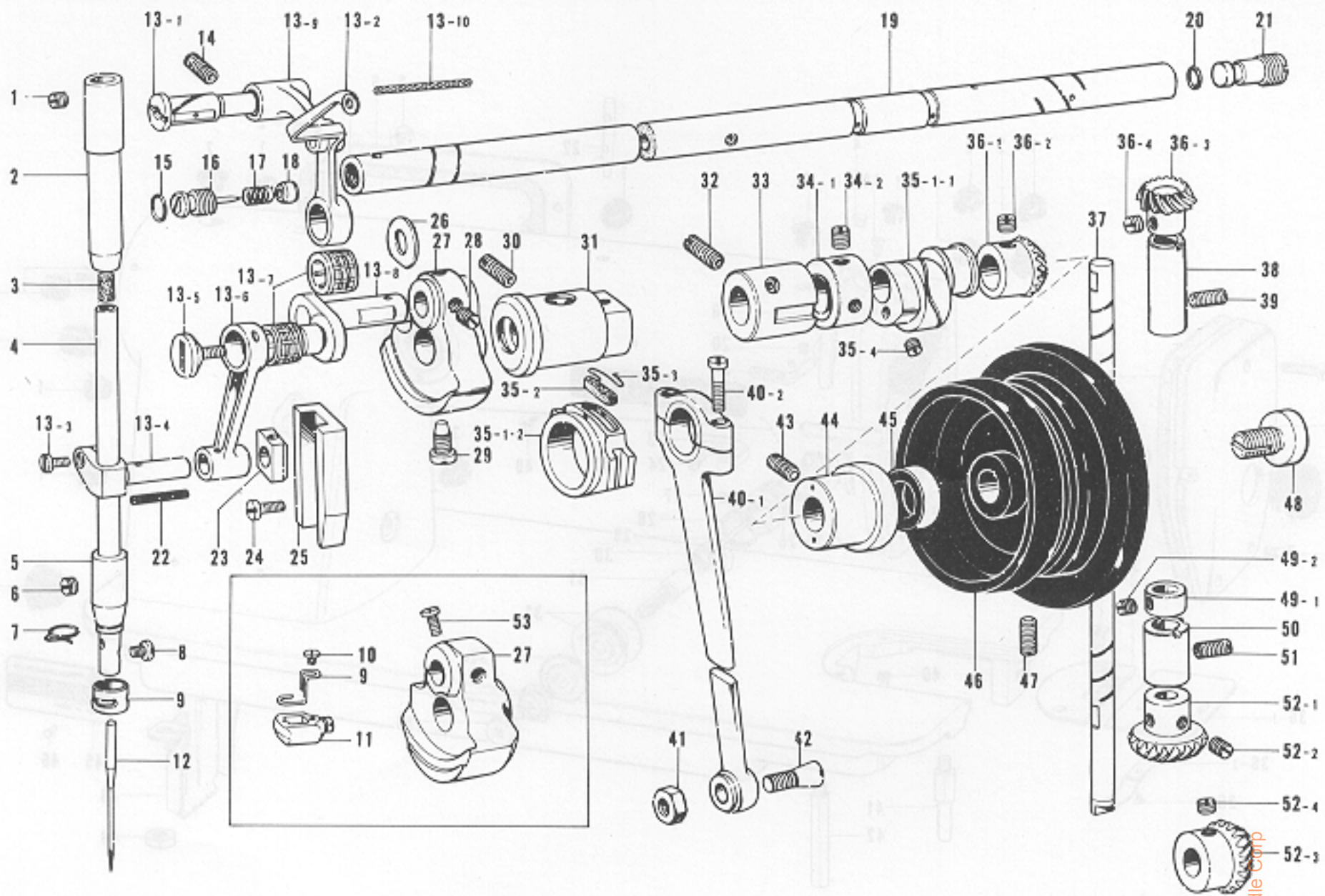


A. Machine Body



Ref. No.	Name of Parts	Q'ty	Parts No.	Assembly No.	Ref. No.	Name of Parts	Q'ty	Parts No.	Assembly No.
A-1	Vinyl Cap	7	104450-0-01		A-27	Screw	1	103950-0-02	
A-2	Oil Cap	3	104449-0-01		A-28	Packing	1	114294-0-01	
A-3	Oil Cap	3	104821-0-01		A-29	Tension Release Pin	1	100400-0-00	
A-4	Cap for Oil Inlet	1	111865-0-01		A-30	Thread Take-up Spring	1	100399-0-01	
A-5	Screw	4	009670-8-12		A-31	Tension Stud	1	100398-0-01	
A-6	Rear Cover	1	111456-0-01		A-32	Tension Disc	2	145446-0-01	
A-7	Packing	1	111457-0-01		A-33	Presser for Tension Disc	1	100134-6-01	
A-8	Oil Cap	2	104832-0-01		A-34	Tension Spring	1		
A-9	Oil Cap	1	104451-0-01		A-35	Tension Control Nut	1	100136-0-01	
A-10	Oil Cap	1	108520-0-01		A-36-1	Slide Plate	1		A-36 Slide Plate Assembly 180018-0-01
A-11	Screw	2	009671-0-13		A-36-2	Slide Plate Spring	1	114561-0-01	
A-12	Oil Cap	1	112782-0-01		A-36-3	Screw	2	122771-0-01	
A-13	Face Plate	1	147340-0-01		A-37	Needle Plate	1	147322-0-01	
A-14	Screw	1	009671-8-13		A-38	Screw	2	100032-0-03	
A-15	Packing	1	109195-0-01		A-39	Arm-Bed Assembly	1		
A-16	Thread Retainer	1	147339-0-01		A-40	Oil Cap	1	104833-0-01	
A-17	Screw	1	009670-6-14		A-41	Bed leg B	1	104830-0-01	
A-18	Screw	1	009680-7-13		A-42	Bed leg A	1	104829-0-01	
A-19	Thread Take-up Cover	1	147338-0-01		A-43	Pump Cover	1	145454-0-01	
A-20	Screw	1	013680-6-12		A-44	Nut	2	100090-0-04	
A-21	Thread Retainer	1	114931-0-01		A-45	Model Plate	1		
A-22	Spool Pin	1	147557-0-01		A-46	Pin	2		
A-23	Thread Retainer	1	147339-0-01		A-47	Name Plate "BROTHER"	1		
A-24	Screw	1	009670-6-14		A-48	Screw	2		
A-25	Screw	1	100402-0-04						
A-26	Upper Tension Regulator Bracket	1	144741-0-01						

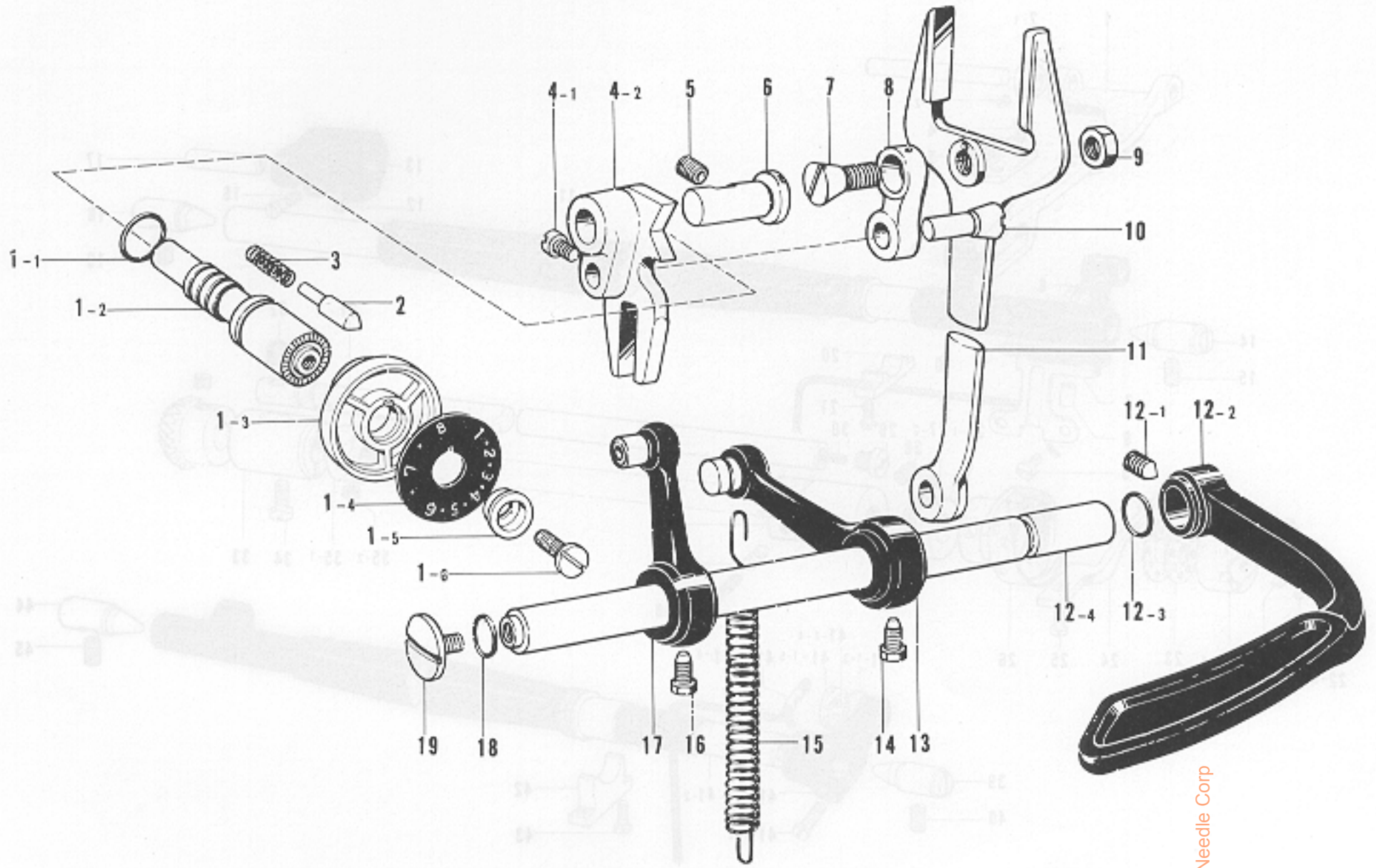
B. Upper Shaft, Needle Bar, Thread Take-up Mechanism



Ref. No.	Name of Parts	Q'ty	Parts No.	Assembly No.	Ref. No.	Name of Parts	Q'ty	Parts No.	Assembly No.
B-1	Screw	1	100260-0-01		B-31	Upper Shaft Bushing Left	1	111459-0-01	
B-2	Needle Bar Bushing Upper	1	111463-0-01		B-32	Screw	1	013761-4-10	
B-3	Needle Bar Cork	1	111863-0-01		B-33	Upper Shaft Bushing Intermediate	1	140726-0-00	
B-4	Needle Bar	1			B-34-1	Collar	1		B-34 Collar 181994-0-01
B-5	Needle Bar Bushing D	1			B-34-2	Screw	2	013760-8-10	
B-6	Screw	1	100260-0-01		B-35-1-1	Feed Cam	1		B-35-1 Feed Cam Assembly 147345-0-01
B-7	Thread Guide Under	1			B-35-1-2	Feed Cam Sleeve	1		
B-8	Screw	1			B-35-2	Felt	1	106442-0-01	B-35 Feed Cam Assembly 181647-0-01
B-9	Needle Bar Thread Guide	1			B-35-3	Felt Wipe	1	106440-0-00	
B-10	Screw	1			B-35-4	Screw	2	013760-8-10	
B-11-1	Needle Clamp	1		B-11 Needle Clamp	B-36-1	Upper Shaft Gear	1		B-36 Upper Shaft Gear Assembly 180022-0-01
B-11-2	Screw	1			B-36-2	Screw	2	013770-7-10	
B-12	Needle DB	1			B-36-3	Vertical Shaft Gear (Upper)	1		
B-13-1	Thread Take-up Supporter Shaft	1		B-13 Take-up Lever Complete 147323-0-01	B-36-4	Screw	2	013770-7-10	
B-13-2	Thread Take-up Lever	1			B-37	Vertical Shaft	1	146330-0-01	
B-13-3	Screw	1	140004-0-01		B-38	Vertical Shaft Upper Bushing	1	142708-0-00	
B-13-4	Needle Bar Clamp	1			B-39	Screw	1	013760-6-10	
B-13-5	Screw	1	145465-0-01		B-40-1	Crank Rod	1		B-40 Crank Rod Assembly 182049-0-01
B-13-6	Needle Bar Crank Rod	1			B-40-2	Set Screw	2	107428-0-01	
B-13-7	Needle Roller Bearing	2			B-41	Nut	1	104689-0-01	
B-13-8	Needle Bar Crank	1			B-42	Taper Screw	1	100310-0-01	
B-13-9	Thread Take-up Lever Supporter	1	147324-0-01		B-43	Screw	1	013760-6-10	
B-13-10	Wick	1	140430-0-01		B-44	Upper Shaft Bushing R	1	146331-0-01	
B-14	Screw	1	013761-4-10		B-45	Oil Seal	1	101487-0-00	
B-15	Packing	1	118770-0-01		B-46	Arm Pulley	1	147327-1-01	
B-16	Oil Adjusting Screw for Upper Shaft	1	140412-0-01		B-47	Screw	2	013761-4-10	
B-17	Spring	1	116799-0-01		B-48	Screw	1	104478-0-01	
B-18	Oil Bushing	1	140357-0-01		B-49-1	Collar	1		B-49 Collar 181995-0-01
B-19	Upper Shaft	1	109137-0-01		B-49-2	Screw	2	101706-0-03	
B-20	O Ring	1	081002-6-70		B-50	Vertical Shaft Bushing (Lower)	1	117054-0-00	
B-21	Oil Screw Right for Upper Shaft	1	104555-0-01		B-51	Screw	1	013761-4-10	
B-22	Wick	1	108809-0-01		B-52-1	Vertical Shaft Gear (Lower)	1		B-52 Lower Shaft Gear Assembly 180023-0-01
B-23	Needle Bar Guide Slide Block	1	102630-0-01		B-52-2	Screw	2	013770-7-10	
B-24	Screw	2	009670-6-12		B-52-3	Lower Shaft Gear	1		
B-25	Needle Bar Guide	1	102631-0-00		B-52-4	Screw	2	013770-7-10	
B-26	Washer	1	110367-0-01		B-53	Screw	1		
B-27	Thread Take-up Crank	1							
B-28	Screw		013770-7-10						
B-29	Screw	1	104464-0-01						
B-30	Screw	1	013761-4-10						

C. Feed Mechanism

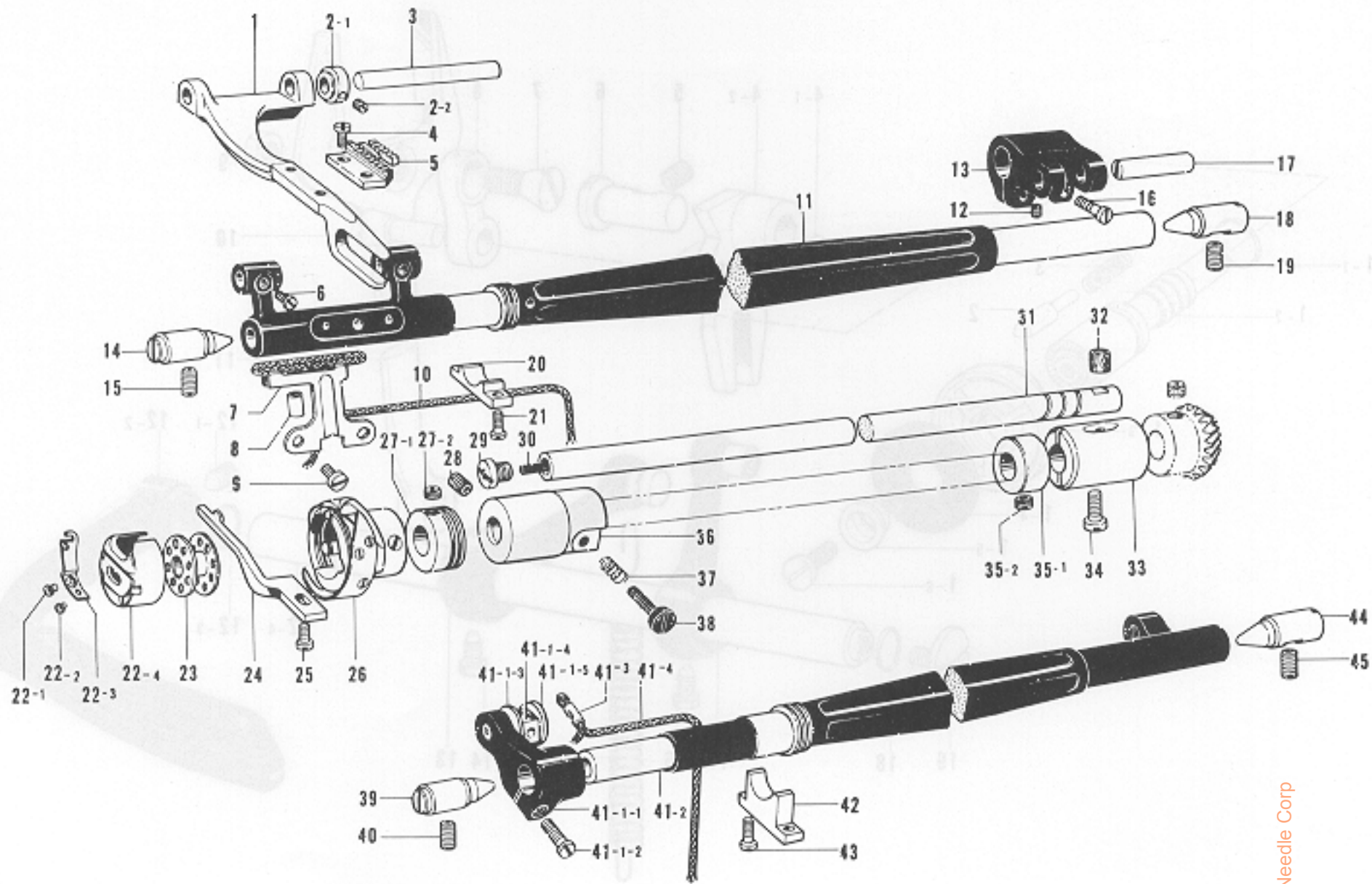
D. Feed Rotary Hook Mechanism



from the library of: Diamond Needle Corp

Ref. No.	Name of Parts	Q'ty	Parts No.	Assembly No.	Ref. No.	Name of Parts	Q'ty	Parts No.	Assembly No.
C- 1- 1	Packing	1	108549-0-01	C- 1 Length Control Assembly 181709-0-01	C-10	Taper Hinge	1	100312-0-01	C-12 Reverse Lever Assembly 181671-0-01
C- 1- 2	Length Control Screw	1	109151-1-01		C-11	Feed Forked Connector	1	109147-0-01	
C- 1- 3	Length Control	1	142483-0-01		C-12- 1	Set Screw	1	015771-0-12	
C- 1- 4	Washer	1	142746-0-02		C-12- 2	Reverse Lever	1	118752-0-01	
C- 1- 5	Length Control Plate	1	147343-0-01		C-12- 3	Packing	1	104564-0-01	
C- 1- 6	Screw	1	142747-0-02		C-12- 4	Feed Regulator Lever Shaft	1	108541-0-01	
C- 2	Notch for Length Control	1	100327-0-01	C-13	Feed Regulator Lever B with Hook	1	108544-0-03	C-14 Bolt	
C- 3	Notch Spring	1	100328-0-01	C-14	Bolt	1	142403-0-01		
C- 4- 1	Screw	1	102627-0-01	C-15	Feed Regulator Tension Spring	1	109150-0-01		
C- 4- 2	Feed Regulation	1		C-16	Bolt	1	108749-0-01	C-17 Feed Regulator Lever Assembly	
C- 5	Screw	1	013781-0-12	C-17	Feed Regulator Lever Assembly	1	116953-0-01		
C- 6	Stud	1	111491-0-01	C-18	Packing	1	104564-0-01	C-19 Screw	
C- 7	Taper Screw	1	100310-0-01	C-19	Screw	1	100511-0-03		
C- 8	Feed Link	1	104897-0-01						
C- 9	Nut	1	104689-0-01						

D. Feed, Rotary Hook Mechanism

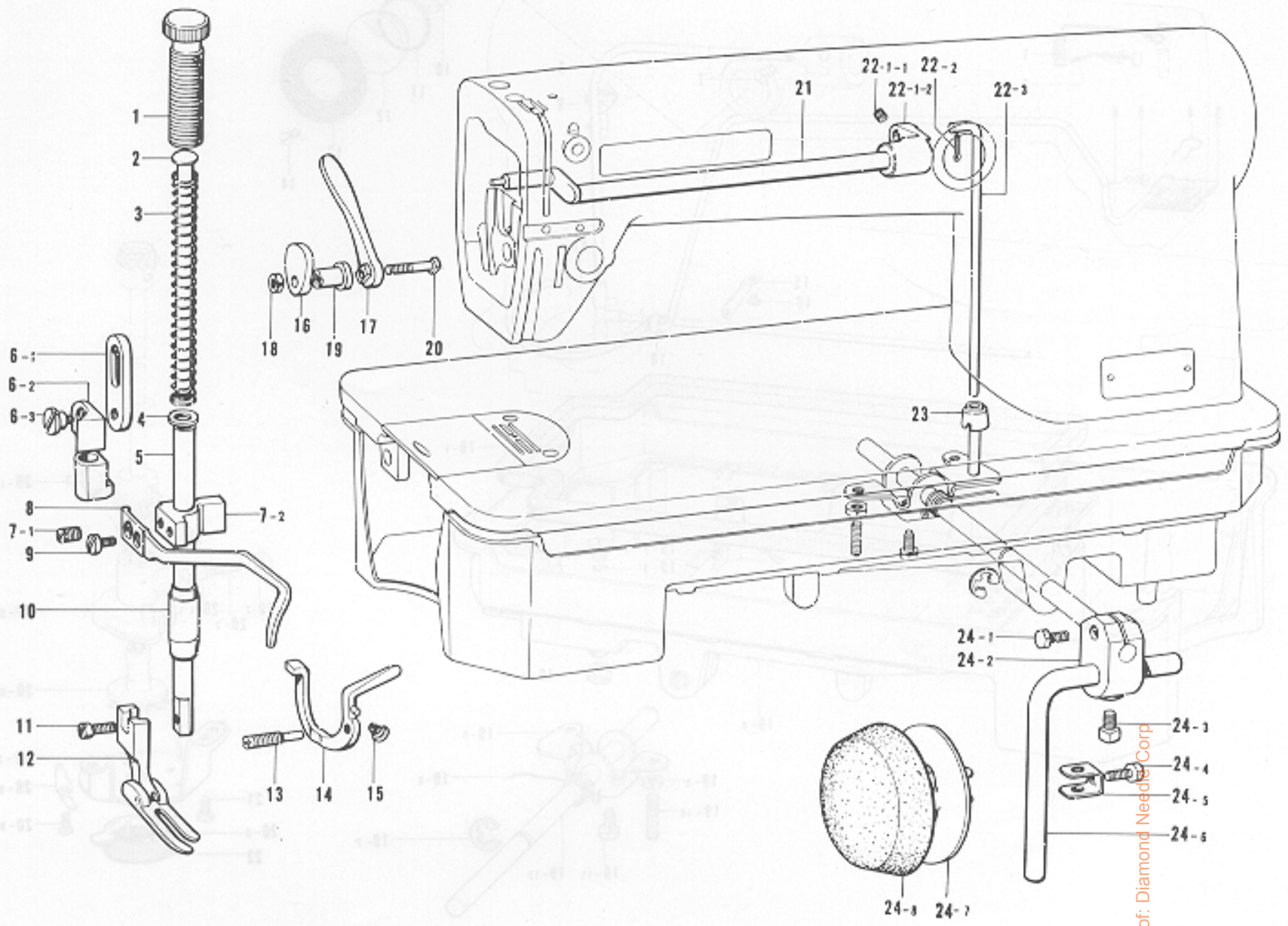


From the library of: Diamond Needle Corp

Ref. No.	Name of Parts	Q'ty	Parts No.	Assembly No.	Ref. No.	Name of Parts	Q'ty	Parts No.	Assembly No.
D- 1	Feed Bar	1	147334-0-01		D-26	Rotary Hook Assembly	1		
D- 2-1	Collar	1		D-2 Collar 182048-0-01	D-27-1	Oil Rejector	1		D-27 Oil Rejector 144943-0-01
D- 2-2	Screw	2	144458-0-01		D-27-2	Screw	2	013689-4-12	
D- 3	Feed Bar Shaft	1	109156-0-01		D-28	Screw	1	013680-8-12	
D- 4	Screw	2	100080-0-03		D-29	Screw	1	109173-0-01	
D- 5	Feed Dog	1	147335-0-01		D-39	Oil Felt	1	106436-0-01	
D- 6	Screw	2	104908-0-01		D-31	Lower Shaft	1	147336-0-01	
D- 7	Vinyl Tube	1	104566-0-01		D-32	Felt	1	107155-0-01	
D- 8	Wick Supporter	1	109171-0-01		D-33	Lower Shaft Bushing Right	1	104520-1-00	
D- 9	Screw	2	009670-5-12		D-34	Screw	1	013680-8-12	
D-10	Wick	1	108801-0-01		D-35-1	Collar	1		D-35 Collar 181995-0-01
D-11	Feed Rock Shaft	1	147333-0-01		D-35-2	Screw	2	101706-0-03	
D-12	Screw	1	013689-4-12		D-36	Lower Shaft Bushing Left	1	118761-1-00	
D-13	Feed Rock Shaft Arm	1	144564-0-01		D-37	Spring	1	116794-0-01	
D-14	Taper Center Left	1	104847-0-01		D-38	Screw	1	145534-0-01	
D-15	Screw	1	013770-7-10		D-39	Taper Center Left	1	104847-0-01	
D-16	Screw	2	009681-2-12		D-40	Screw	1	013770-7-10	
D-17	Feed Rock Shaft Arm Pin	1	109153-0-01		D-41-1-1	Feed Lifting Arm	1		D-41-1 Feed Lifting Arm Assembly 181941-0-01
D-18	Taper Center Right	1	104848-0-01		D-41-1-2	Screw	1	009681-6-12	
D-19	Screw	1	013770-7-10		D-41-1-3	Washer	1		
D-20	Oil Stopper	1	118558-0-01		D-41-1-4	Slide Block	1		
D-21	Screw	2	009670-8-12		D-41-1-5	Slide Block Stud	1		
D-22-1	Spring Set Screw	1	181937-0-01	D-22 Bobbin Case Assembly 147790-0-01	D-41-2	Feed Lifting Rock Shaft	1	108556-0-03	D-41 Feed Lifting Lock Shaft 181718-0-01
D-22-2	Spring Adjusting Screw	1	181938-0-01		D-41-3	Wick Supporter	1	104567-0-01	
D-22-3	Lower Thread Adjusting Spring	1	181936-0-01		D-41-4	Wick	1	108802-0-01	
D-22-4	Bobbin Case	1			D-42	Oil Stopper	1	118559-0-01	
D-23	Bobbin	1	117061-0-01		D-43	Screw	2	009670-8-12	
D-24	Bobbin Case Holder Position Bracket	1	147337-0-01		D-44	Taper Center Right	1	104848-0-01	
D-25	Screw	1	009681-0-12		D-45	Screw	1	013770-7-10	

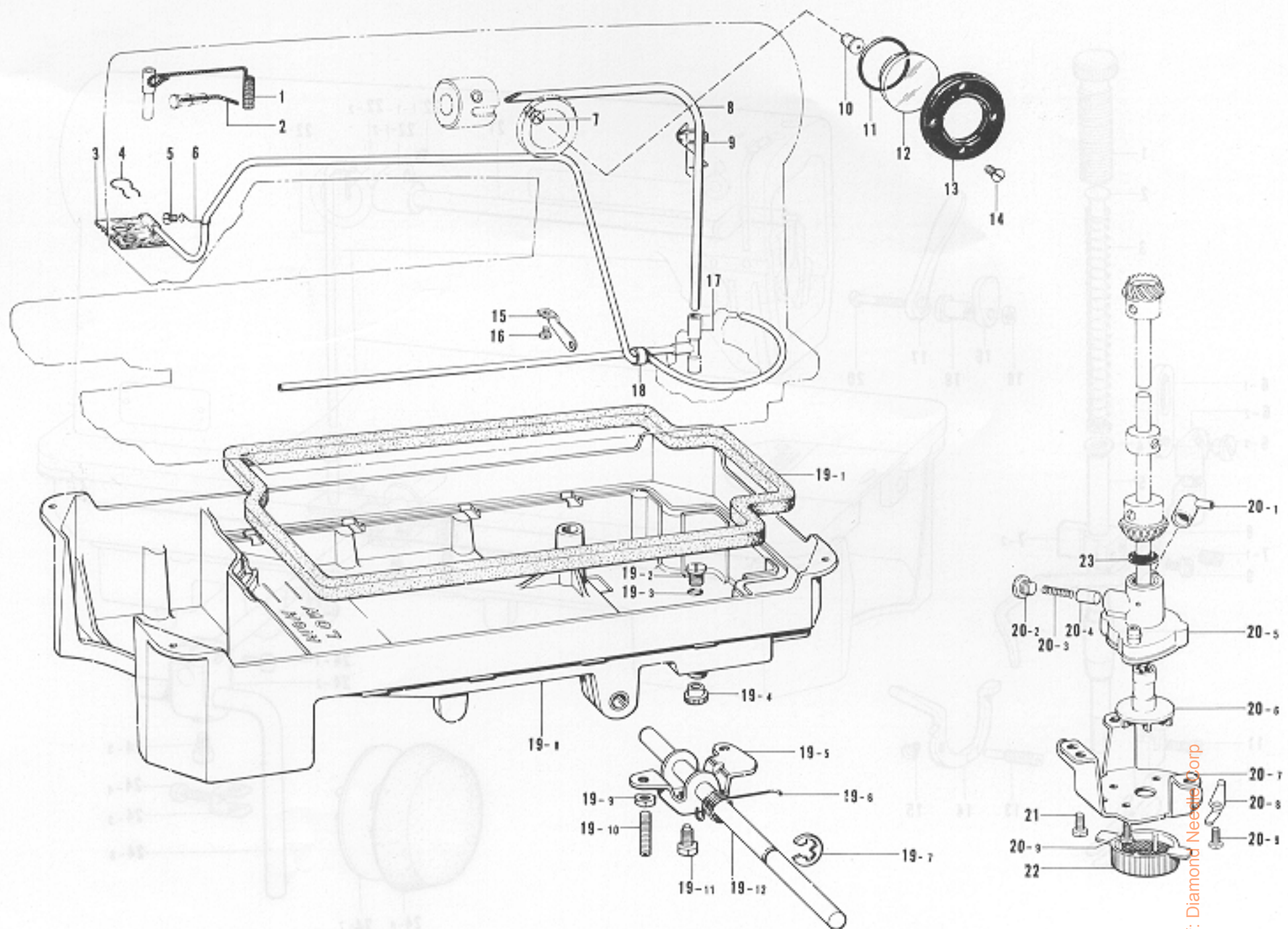
E. Presser Foot, Knee Lifter Mechanism

F. Lubrication



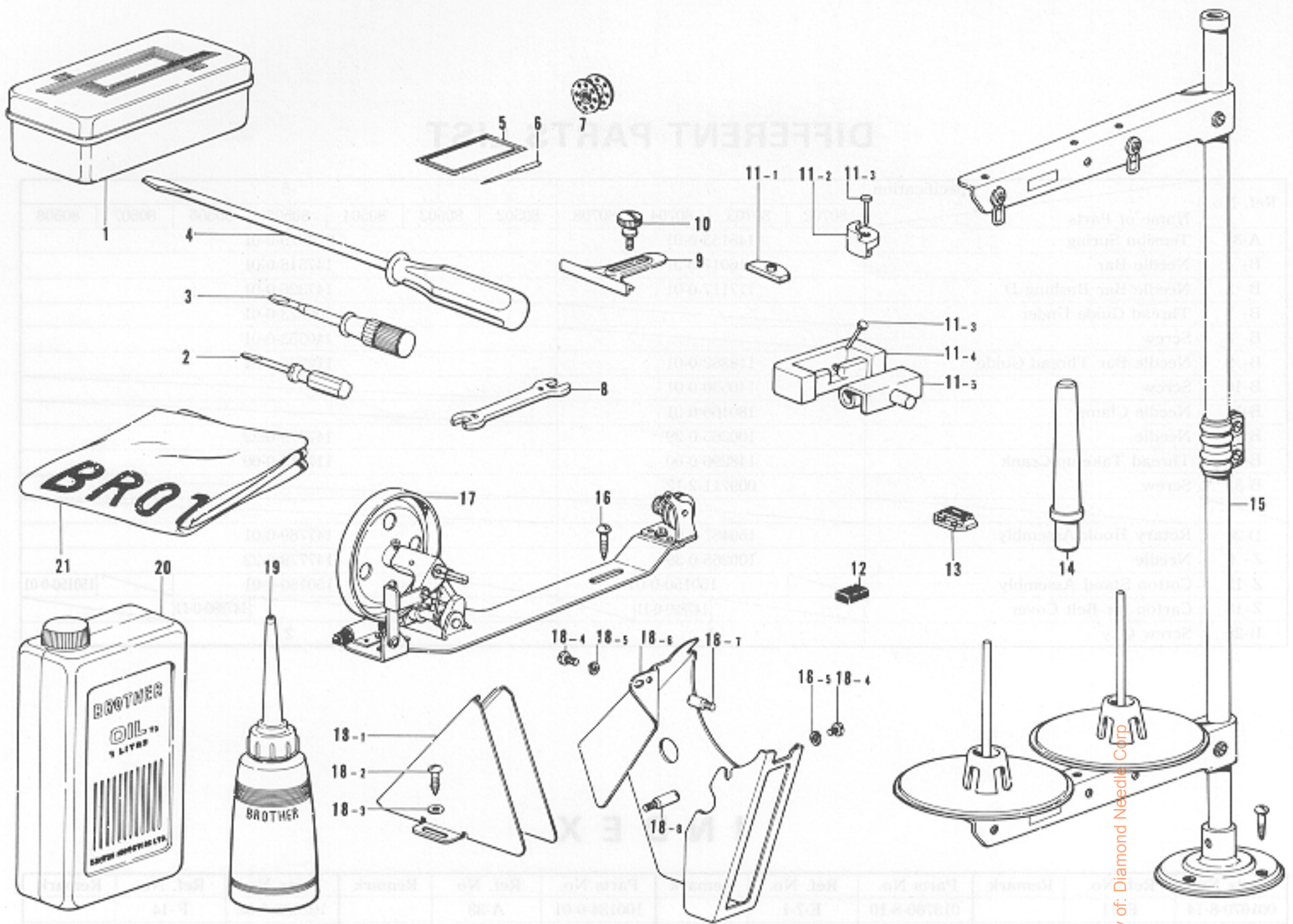
Ref. No.	Name of Parts	Q'ty	Parts No.	Assembly No.	Ref. No.	Name of Parts	Q'ty	Parts No.	Assembly No.
E-1	Screw	1	141207-0-01		E-17	Presser Bar Lifter Lever	1	142016-0-01	
E-2	Presser Spring Bar	1	141208-0-01		E-18	Nut	1	021680-2-02	
E-3	Presser Spring	1	141209-0-01		E-19	Presser Bar Lifter Shaft	1	142017-0-01	
E-4	Presser Spring Washer	1	140407-0-01		E-20	Bolt	1	142018-0-01	
E-5	Presser Bar	1	111466-0-01		E-21	Knee Lifter Upper Crank Shaft	1	109145-0-01	
E-6-1	Presser Bar Lifting Connector	1	109144-0-01	E-6 Presser Bar Lifter Assembly 181719-0-01	E-22-1-1	Screw	1	013770-7-10	E-22-1 Knee Lifter Crank Upper Assembly 142756-0-01
E-6-2	Presser Bar Lifter Bracket	1	147999-0-01		E-22-1-2	Knee Lifter Crank Upper	1		
E-6-3	Screw	1	100294-0-01						
E-7-1	Screw	1	013760-8-10	E-7 Presser Bar Guide Bracket 180102-0-01	E-22-2	Pin	1	045161-0-00	E-22 Knee Lifter Crank Upper Assembly 142756-0-01
E-7-2	Presser Bar Bracket	1			E-22-3	Knee Lifter Connecting Rod	1	141168-0-01	
E-8	Presser Bar Bracket Thread Guide	1	111469-0-01		E-23	Knee Lifter Complying Bar	1	145573-0-00	
E-9	Screw	1	009680-7-13		E-24-1	Bolt	1	017762-6-13	E-24 Knee Lifter Assembly 181427-0-01
E-10	Presser Bar Bushing	1	110340-0-01		E-24-2	Knee Lifter Joint	1		
E-11	Screw	1	001670-8-14		E-24-3	Bolt	1	100463-0-01	
E-12	Presser Foot	1	147328-0-01		E-24-4	Bolt	1	110087-0-01	
E-13	Hinge Screw	1	109163-0-01		E-24-5	Knee Lifter Plate Stopper	1		
E-14	Tension Release Lever	1	111470-0-00		E-24-6	Knee Lifter Bar	1		
E-15	Spring	1	100405-0-01		E-24-7	Knee Lifter Plate	1		
E-16	Presser Bar Lifter Cam	1	142015-0-01		E-24-8	Knee Lifter Cover	1	140503-0-01	

F. Lubrication



Ref. No.	Name of Parts	Q'ty	Parts No.	Assembly No.	Ref. No.	Name of Parts	Q'ty	Parts No.	Assembly No.
F- 1	Wick	1	108804-0-01		F-19- 4	Oil Cap	1	140480-0-01	
F- 2	Wick	1	109405-0-01		F-19- 5	Knee Lifter	1	146037-0-01	
F- 3	Oil Tube Assembly	1	145792-0-01		F-19- 6	Spring	1	146038-0-01	
F- 4	Felt Support	1	145737-0-01		F-19- 7	Stop Ring	1	146293-0-01	F-19
F- 5	Set Screw	1	009670-5-12		F-19- 8	Oil Pan	1	149580-0-01	Oil Pan
F- 6	Tube Holder	1	148806-0-01		F-19- 9	Nut	2	100022-0-04	Assembly
F- 7	Screw	1	145992-0-01		F-19-10	Screw	2	104885-0-01	181420-2-01
F- 8	Upper Oil Tube	1	146329-0-00		F-19-11	Bolt	1	146367-0-01	
F- 9	Tube Guard	1	146326-0-01		F-19-12	Knee Lifter Shaft	1	146036-1-01	
F-10	Oil Hole Bolt for Oil Gauge	1	143196-0-01		F-20- 1	Joint	1	144878-0-01	
F-11	O Ring	1	081014-6-70		F-20- 2	Oil Draining Screw	1	112467-0-02	
F-12	Oil Gauge Window	1	194547-0-01		F-20- 3	Spring	1	144876-0-01	F-20
F-13	Oil Gauge Flange	1	104546-6-01		F-20- 4	Plunger	1	144875-0-01	Pump
F-14	Screw	4	102538-0-02		F-20- 5	Pump Body	1	148848-0-01	Assembly
F-15	Tube Holder	1	145542-0-01		F-20- 6	Propeller	1	148849-0-01	181476-1-01
F-16	Screw	1	009680-6-12		F-20- 7	Pump	1	144869-0-01	
F-17	Oil Tube	1	145540-0-01		F-20- 8	Spring	2	144874-0-01	
F-18	Tube	1	146253-0-00		F-20- 9	Screw	4	009670-8-12	
F-19- 1	Packing	1	146040-0-01	F-19	F-21	Screw	3	009680-7-13	
F-19- 2	Screw	1	140518-0-01	Oil Pan	F-22	Pump Filter	1	144872-0-01	
F-19- 3	O Ring	1	081007-0-70	Assembly	F-23	Oil Stopper	1	146196-0-01	
				181420-2-01					

Z. Accessories



Ref. No.	Name of Parts	Q'ty	Parts No.	Assembly No.	Ref. No.	Name of Parts	Q'ty	Parts No.	Assembly No.
Z- 1	Accessory Box Assembly		110436-0-01		Z-14	Head Rest		100477-0-01	
Z- 2	Screw Driver		142443-0-01		Z-15	Cotton Stand Assembly			
Z- 3	Screw Driver		118837-0-01		Z-16	Screw		100666-0-02	
Z- 4	Screw Driver		101572-1-01		Z-17	Bobbin Winder Assembly		117963-0-01	
Z- 5	Bag				Z-18- 1	Belt Cover D			
Z- 6	Needle DB				Z-18- 2	Screw		100666-0-02	
Z- 7	Bobbin		117061-0-01		Z-18- 3	Washer		025750-1-32	
Z- 8	Spanner 8×9		100887-0-01		Z-18- 4	Screw		009680-8-12	Z-18 Carton for Belt Cover
Z- 9	Ruler		100471-0-01		Z-18- 5	Spring Washer		028680-2-42	
Z-10	Thumb Screw		106120-0-01		Z-18- 6	Belt Cover UE			
Z-11- 1	Oil Pan Cushion		146004-0-01	Z-11 Rubber Hinge Assembly 181294-0-01	Z-18- 7	Stud (B)		147856-0-01	
Z-11- 2	Head Cushion		146003-1-01		Z-18- 8	Stud (A)		147855-0-01	
Z-11- 3	Nail		109714-0-00		Z-18- 9	Cushion		146289-0-01	
Z-11- 4	Blower		143910-0-01		Z-19	Oiler		114483-0-01	
Z-11- 5	Hinge		143882-0-01		Z-20	Oil Tank		145277-1-03	
Z-12	Magnet		112525-0-00		Z-21	Head Cover		144222-0-01	
Z-13	Feed Dog		147493-0-01						

* The details of included accessories are subject to change.

* Änderungen in der Aufstellung der mitgelieferten Zubehöre sind vorbehalten.

* Les détails des accessoires inclus sont sujets à des changements.

* Los detalles de los accesorios incluidos pueden variar.